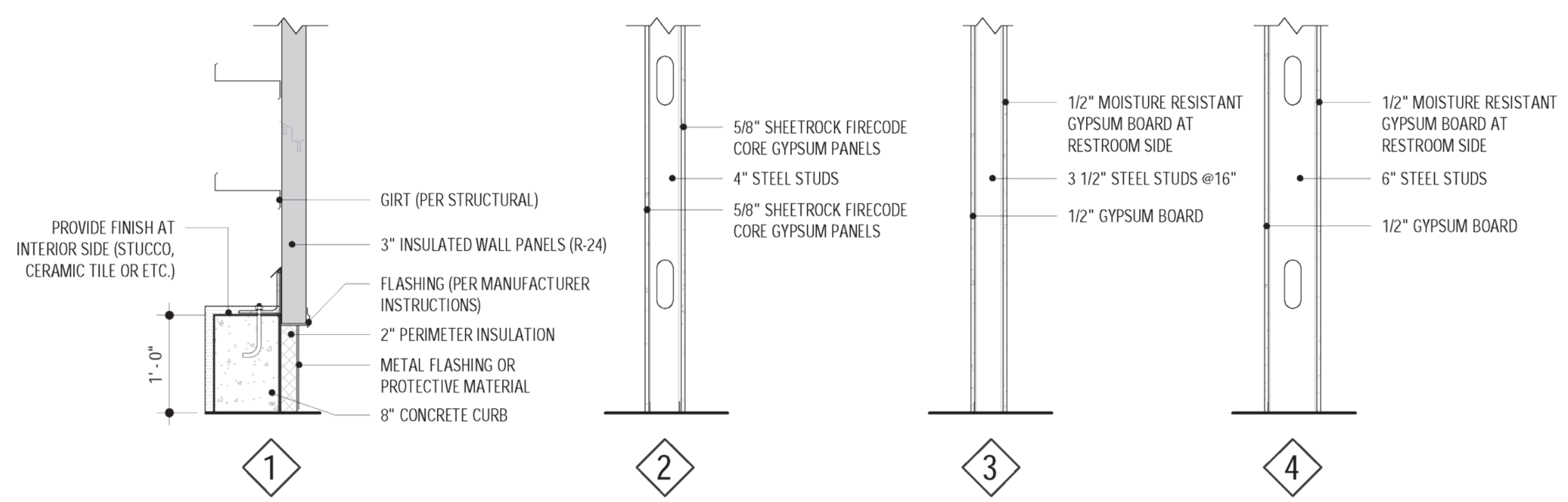


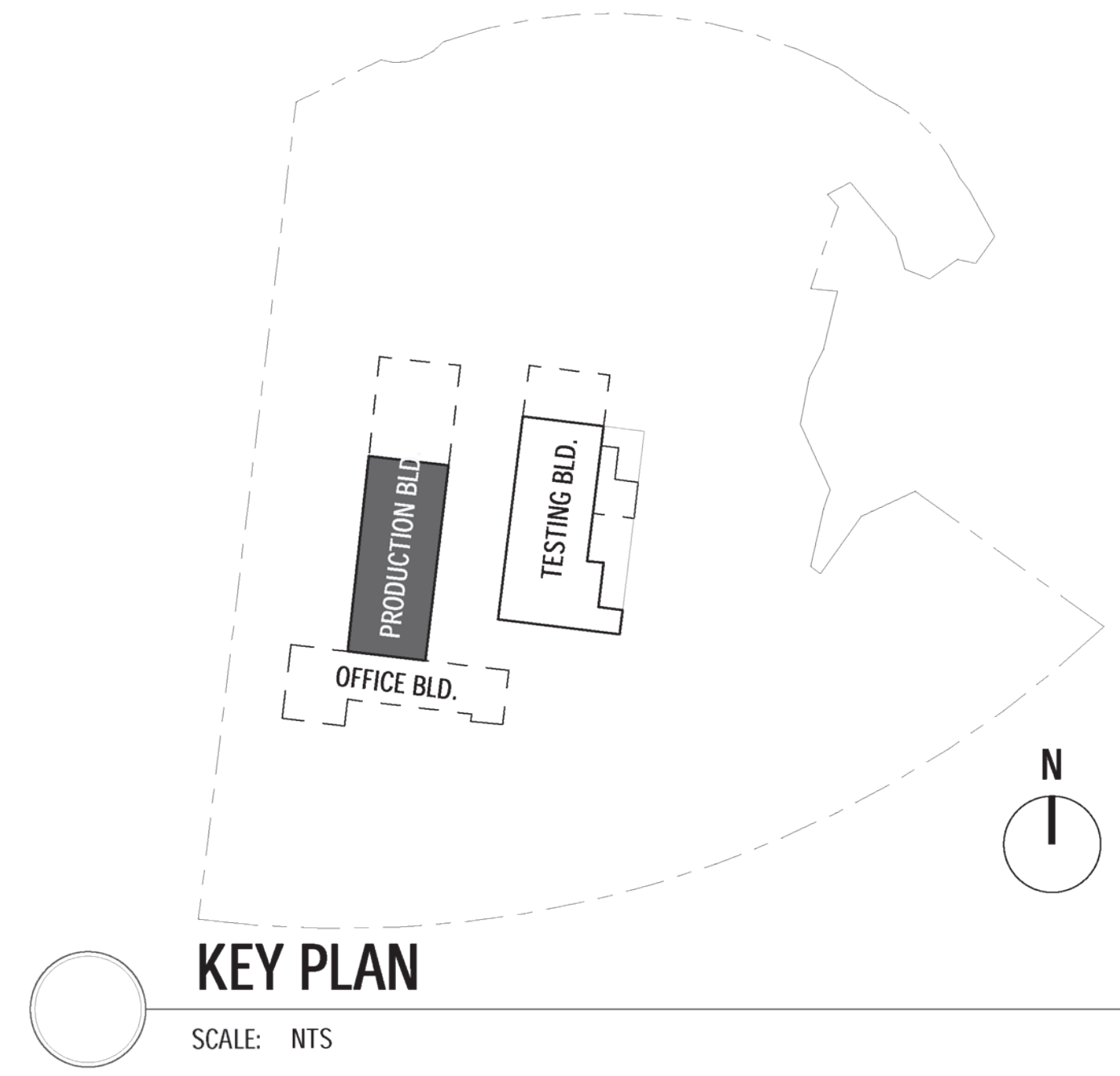
**1 PRODUCTION BUILDING PLAN**  
 SCALE: 1/8" = 1'-0"  
 GROSS BUILDING AREA = 6000 SQ.FT.

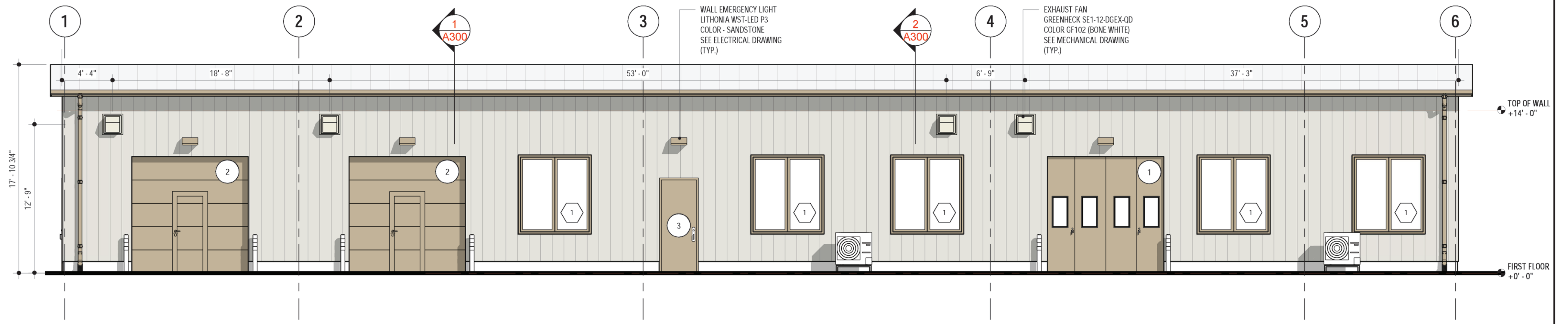


**2 WALL TYPES**  
 SCALE: 3/4" = 1'-0"

NAME	FLOOR FINISH	BASE FINISH	WALL FINISH				CEILING		NOTES
			NORTH	EAST	SOUTH	WEST	FINISH	HEIGHT	
SHIPPING-LOADING	C-1	-	P-1						
POWER ELECTRONIC UNIT 1	C-1	-	P-1						
POWER ELECTRONIC UNIT 2	C-1	-	P-1						
MACHINE SHOP	C-1	-			P-1				
BREAK ROOM	FT-1	B-1	P-1	P-1	P-1	P-1	ACT-1	10'-0"	
UNI-SEX RESTROOM	FT-1	B-1	P-2	P-2	P-2	P-2	ACT-1	10'-0"	
CLOSET	C-1	-	P-1	P-1	P-1	P-1	GB-1	10'-0"	

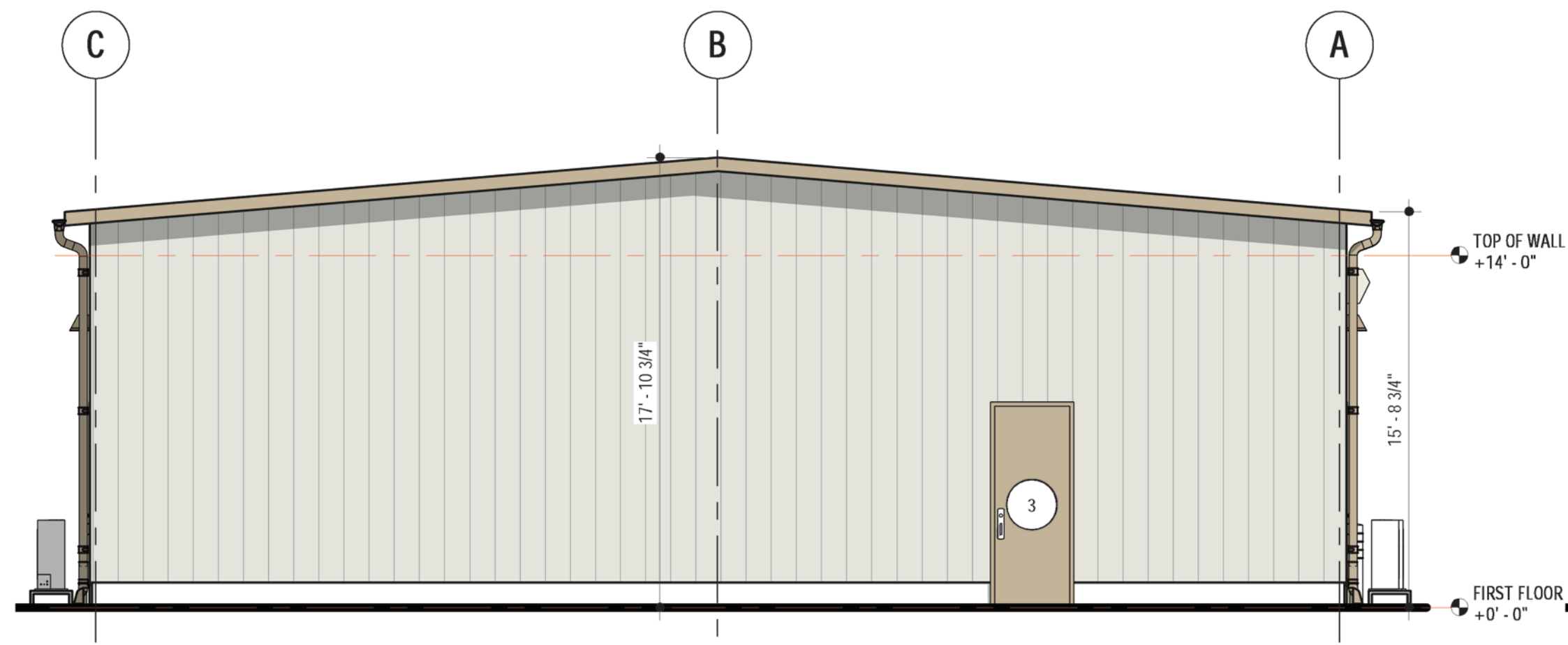
- FLOOR**
- C-1 EPOXY ON POLISHED CONCRETE FLOOR
  - FT-1 PORCELAIN FLOOR TILES
- BASE**
- B-1 4" PORCELAIN TILE BASE
- WALL**
- P-1 TBD PAINTED GYPSUM WALL BOARDS
  - P-2 MOISTURE RESISTANT WALL PAINT OVER GYPSUM WALL BOARDS
- CEILING**
- GB-1 GYPSUM BOARDS PAINTED WHITE
  - ACT-1 ACOUSTICAL GYPSUM CEILING TILE PAINTED WHITE



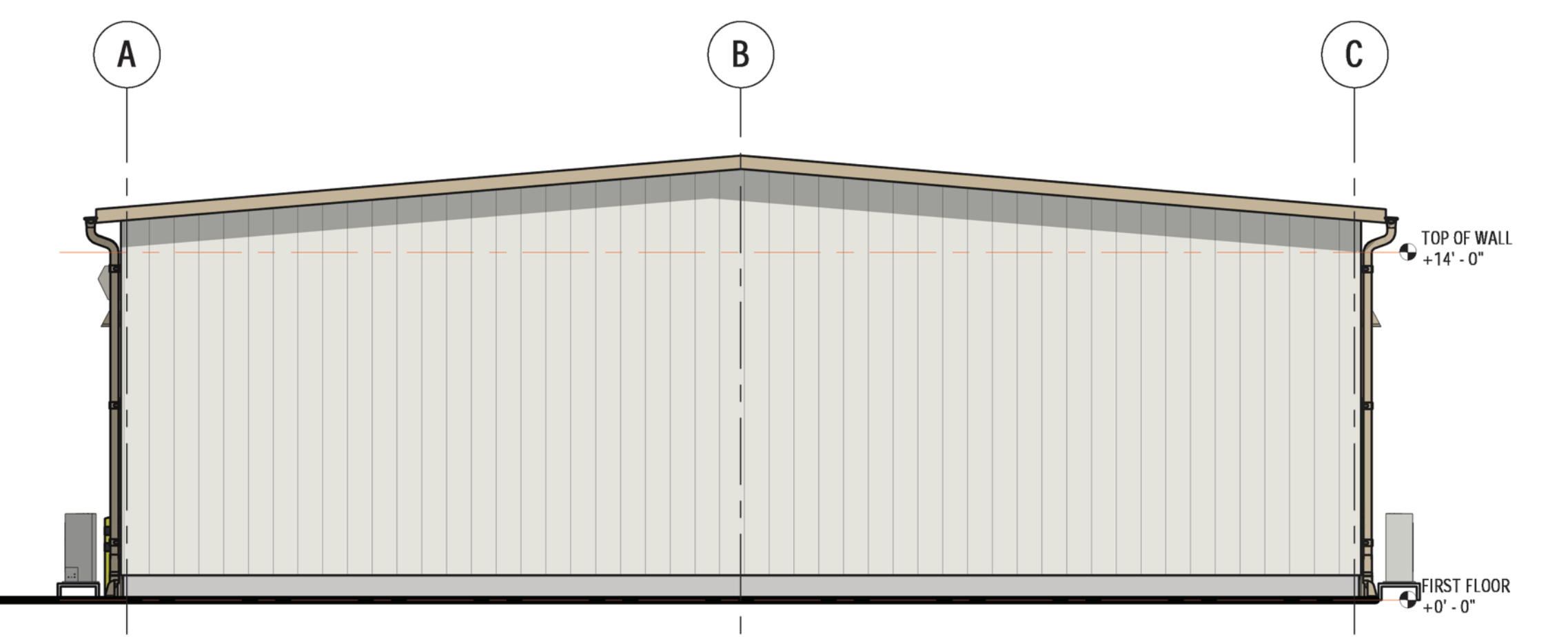


**1 EAST ELEVATION**  
SCALE: 3/16" = 1'-0"

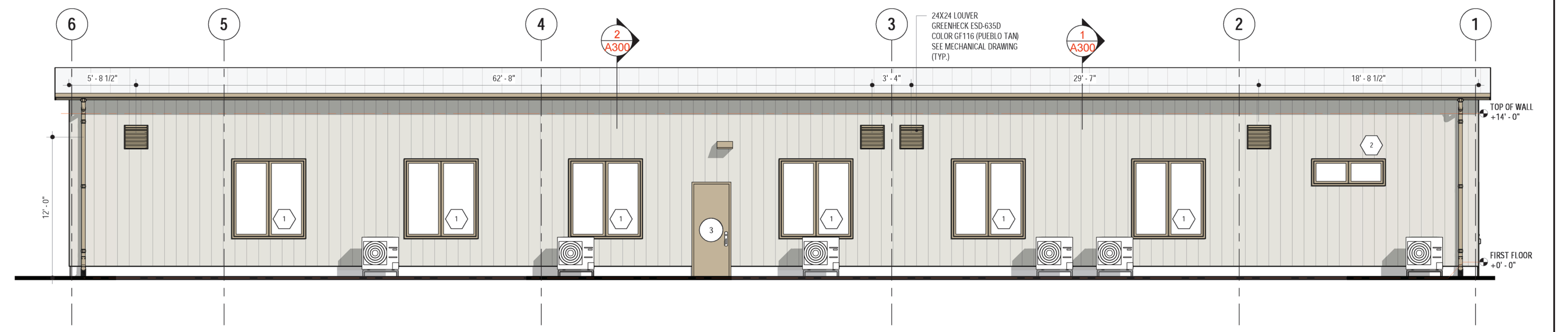
- EXTERIOR FINISH**
- ROOF PANELS REGAL WHITE
  - ROOF TRIMS - FASCIA/RAKE SURREY BEIGE
  - GUTTERS SURREY BEIGE
  - WALL PANELS WARM WHITE
  - DOOR/WINDOW EDGE TRIM SURREY BEIGE
  - OVERHEAD DOORS EDGE AND JAMB / TRIMS SURREY BEIGE
  - BASE TRIM AND FLASHING OVER BOARD INSULATION WARM WHITE
  - CORNER TRIMS WARM WHITE
  - SOFFIT WHITE



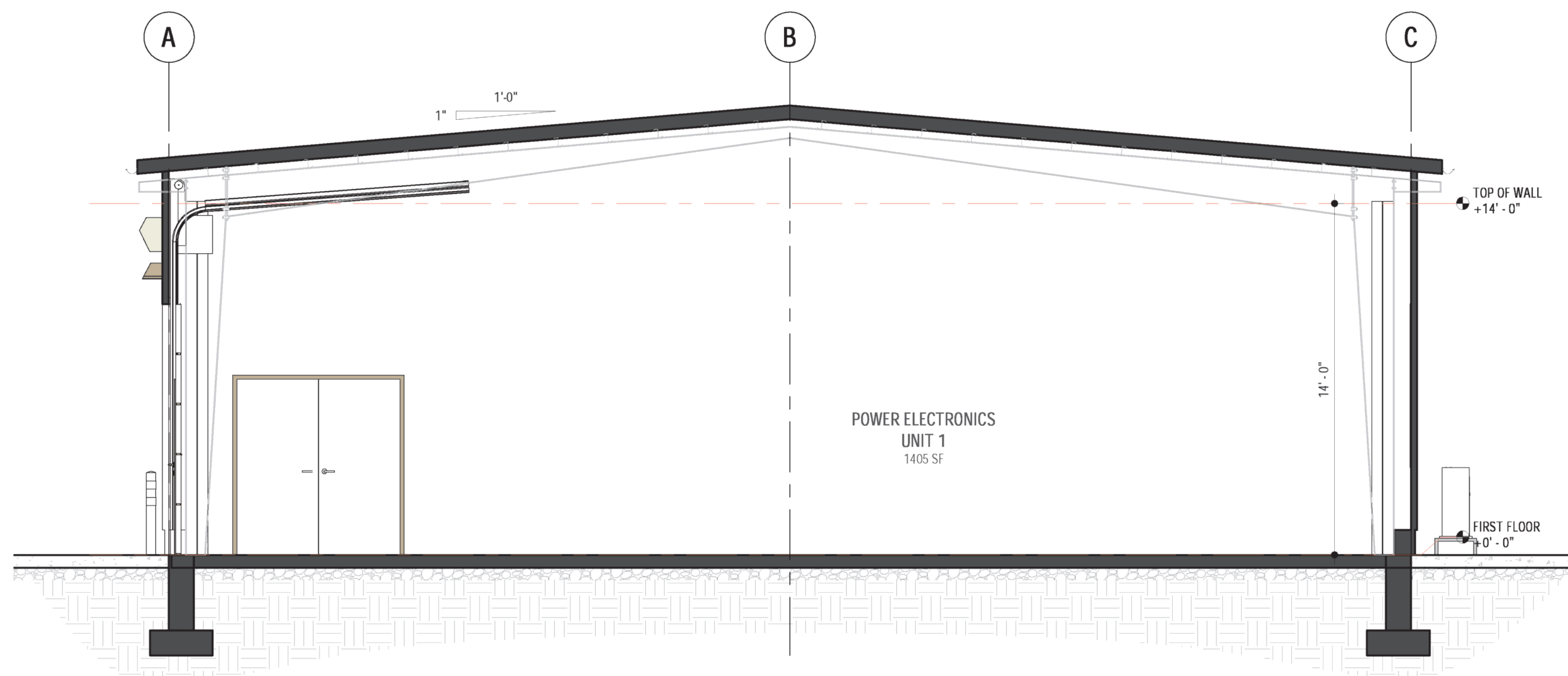
**2 SOUTH ELEVATION**  
SCALE: 3/16" = 1'-0"



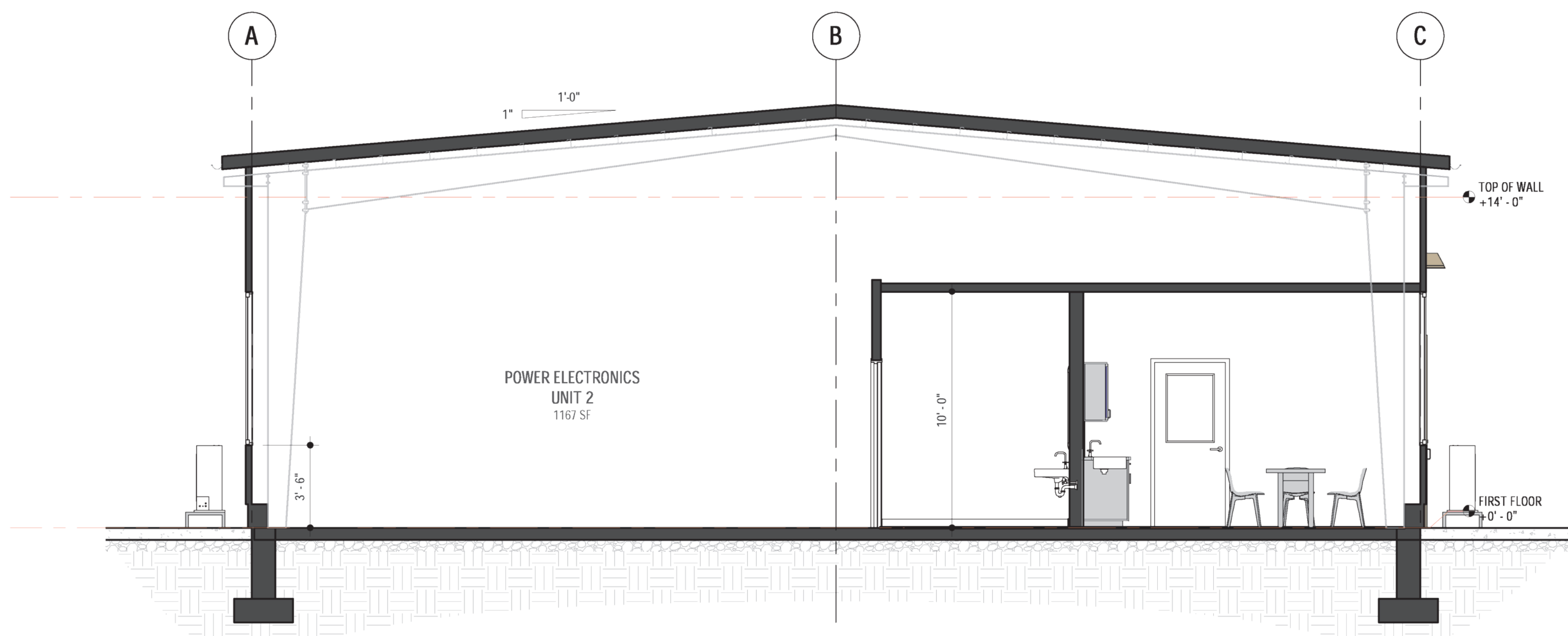
**3 NORTH ELEVATION**  
SCALE: 3/16" = 1'-0"



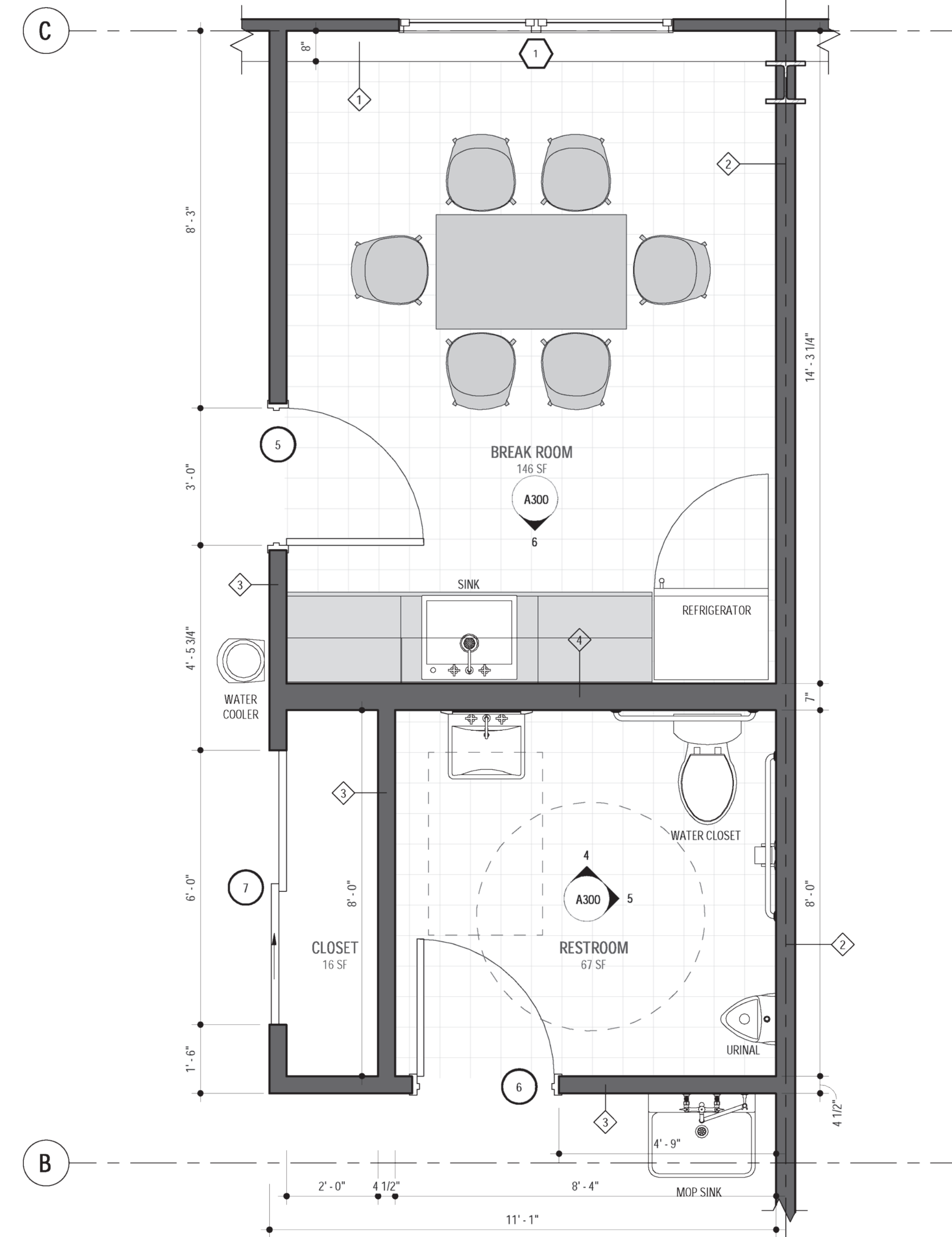
**4 WEST ELEVATION**  
SCALE: 3/16" = 1'-0"



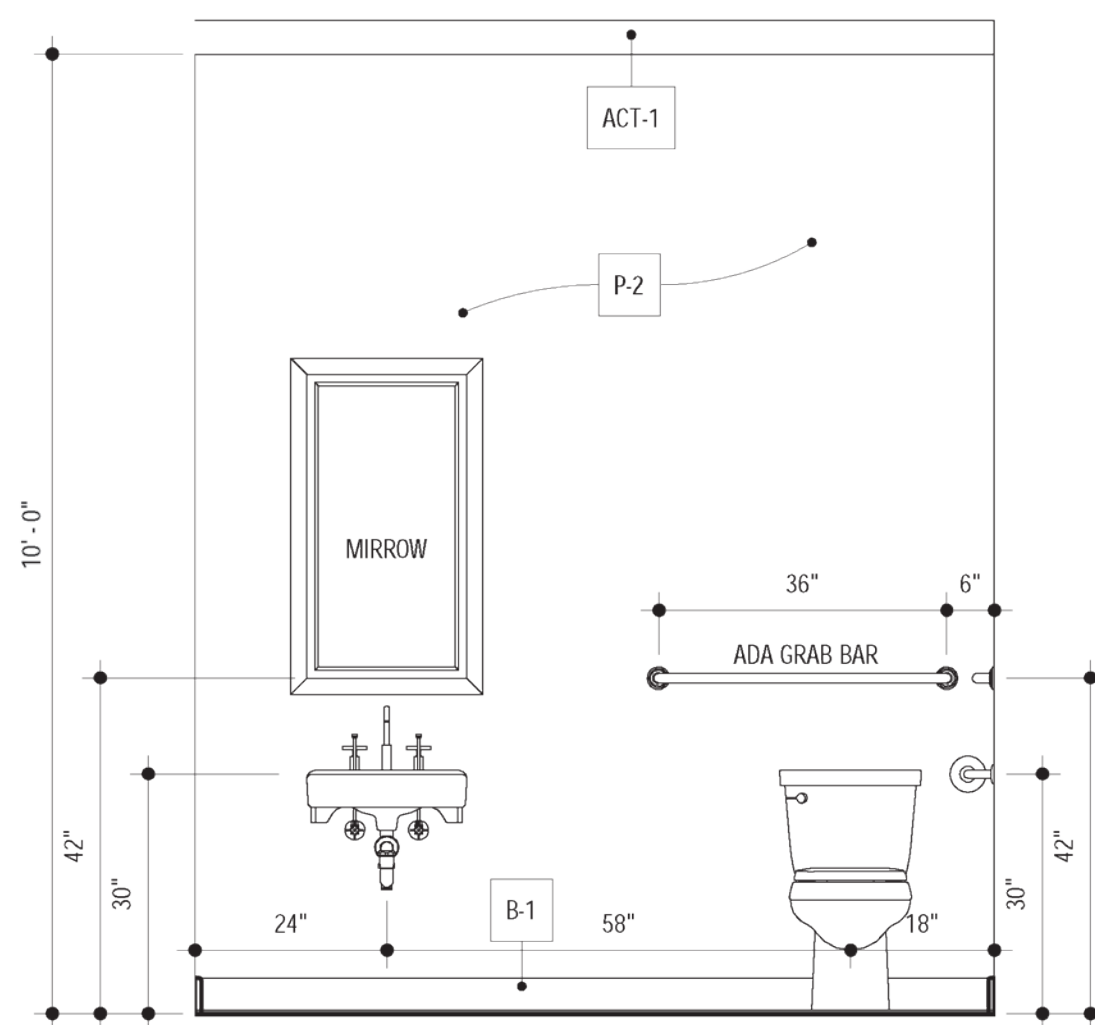
**1 SECTION**  
SCALE: 1/4" = 1'-0"



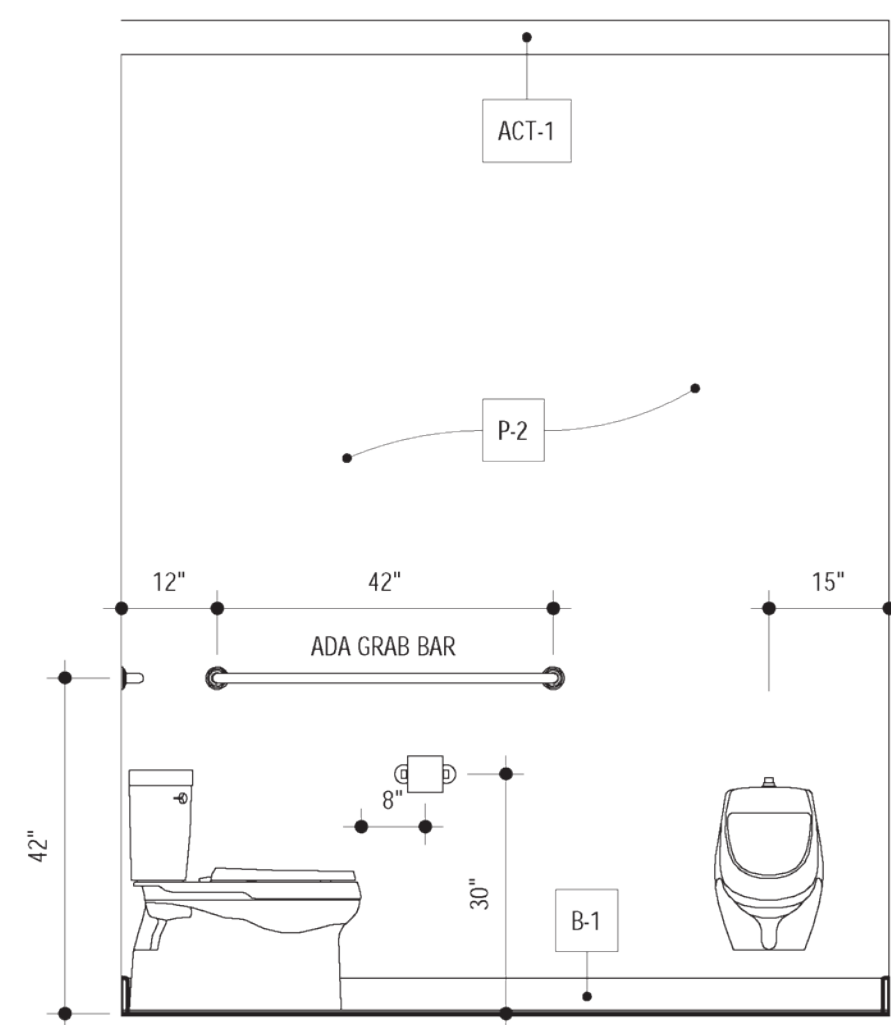
**2 SECTION**  
SCALE: 1/4" = 1'-0"



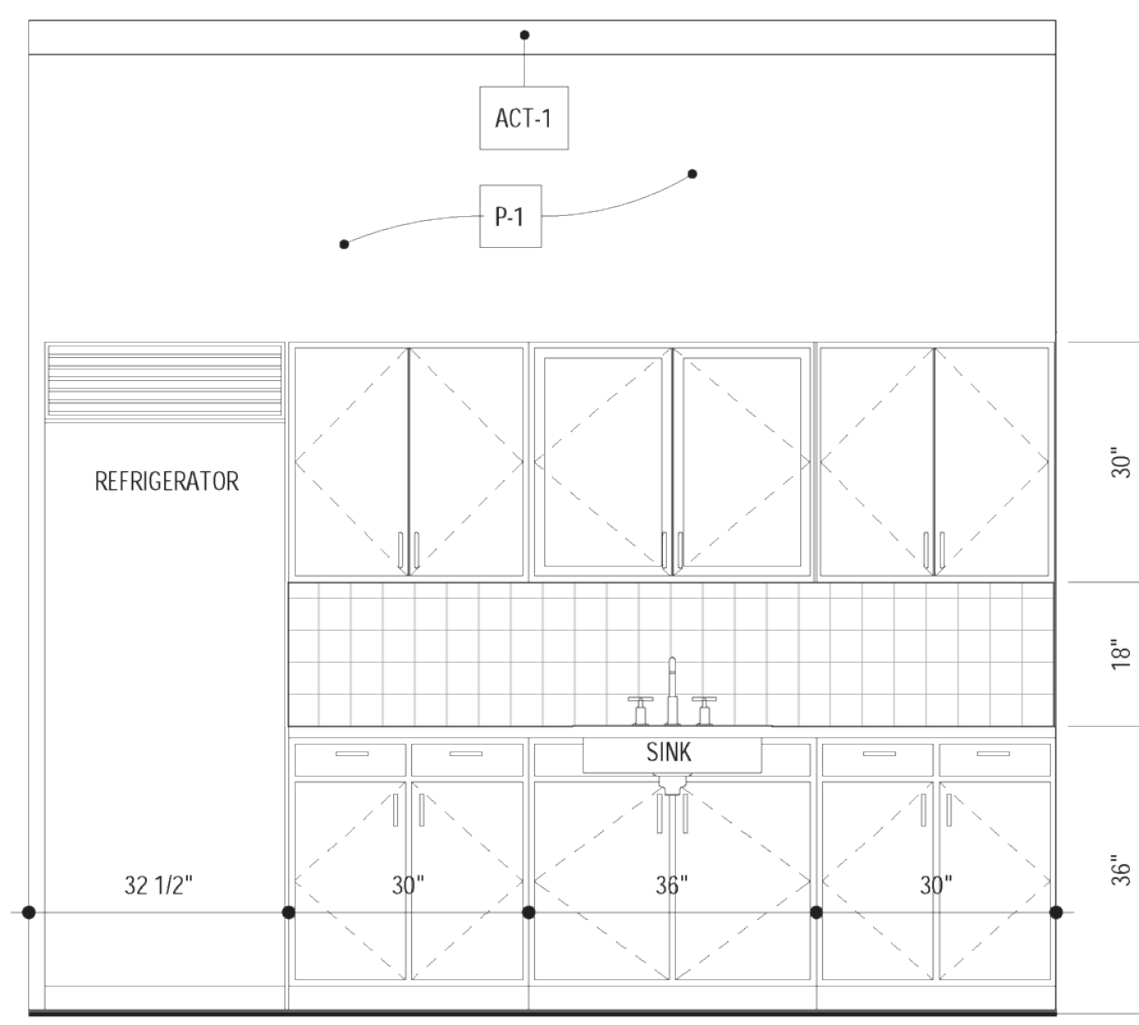
**3 ENLARGED PLAN**  
SCALE: 1/2" = 1'-0"



**4 RESTROOM ELEVATION**  
SCALE: 1/2" = 1'-0"



**5 RESTROOM ELEVATION**  
SCALE: 1/2" = 1'-0"



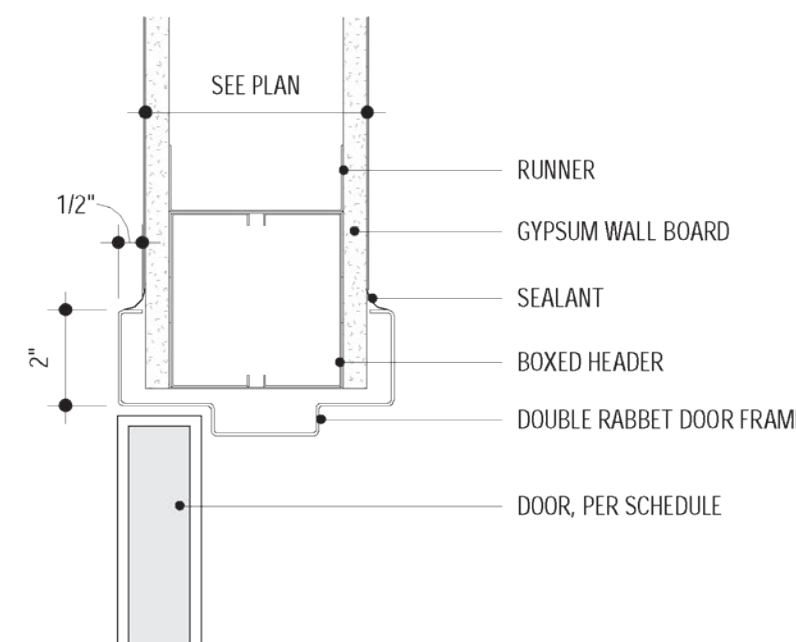
**6 BREAK ROOM ELEVATION**  
SCALE: 1/2" = 1'-0"

WINDOW SCHEDULE

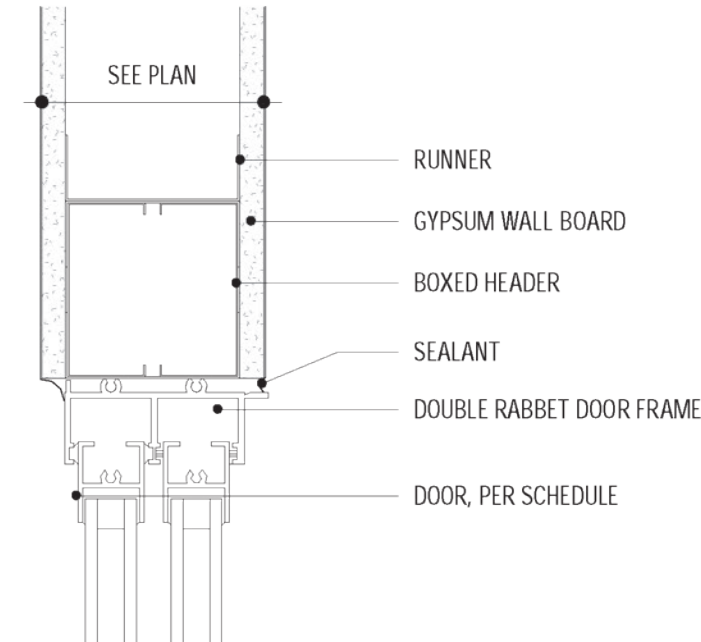
MARK	MATERIAL	TYPE	OPENING HEIGHT	OPENING WIDTH	SILL HEIGHT	AREA	U VALUE	SHGC	COUNT	REMARKS
1	METAL	CASEMENT (DOUBLE)	6'-6"	6'-0"	3'-6"	39 SF	0.35	0.4	11	
2	METAL	SLIDING (DOUBLE)	2'-0"	6'-0"	8'-0"	12 SF	0.35	0.4	1	

DOOR SCHEDULE

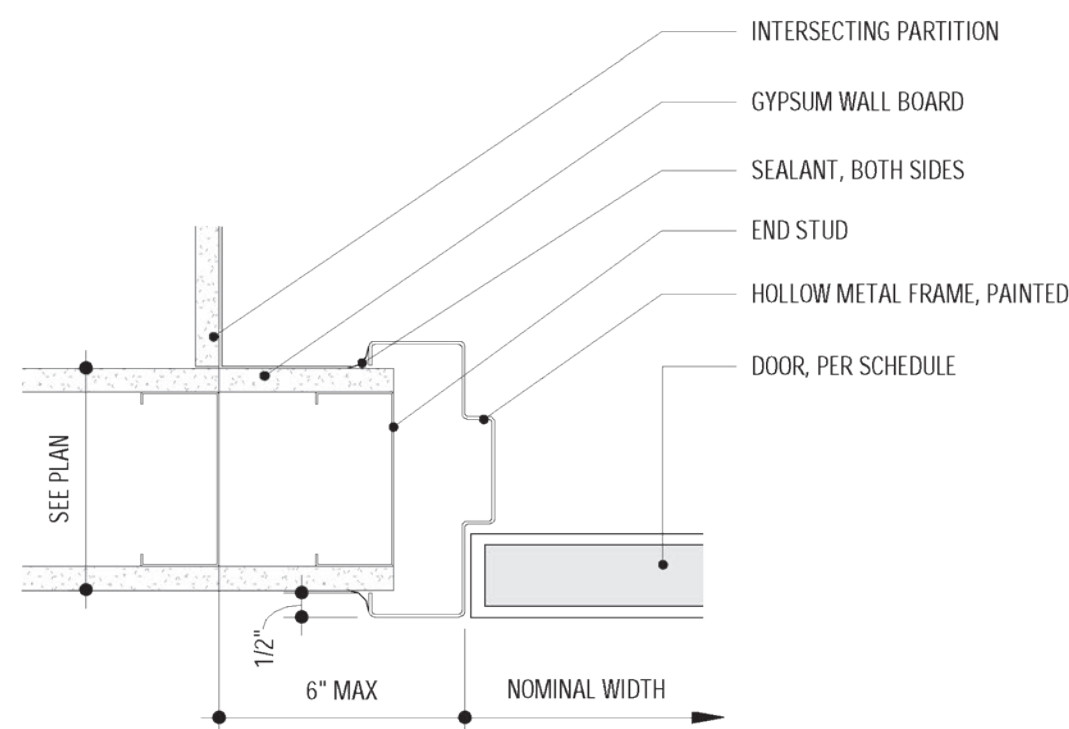
MARK	MATERIAL	TYPE	NOMINAL SIZE			FRAME				AREA	U-VALUE	SHGC	COUNT	HARDWARE	REMARKS
			WIDTH	HEIGHT	THICKNESS	MATERIAL	JAMB	HEAD	SILL						
1	METAL	4 SECTIONS FOLD DOOR	10'-0"	10'-0"		PER MFG.	PER MFG.	PER MFG.	PER MFG.	100 SF			1		
2	METAL	SECTIONAL DOOR WITH PASS THRU	10'-0"	10'-0"		PER MFG.	PER MFG.	PER MFG.	PER MFG.	100 SF			2		
3	METAL	EXTERIOR DOOR	3'-0"	8'-0"	1 3/4"	HOLLOW METAL	PER WALL MFG.	PER WALL MFG.	S-1	24 SF			3	LOCKABLE, WEATHER RESISTANT, PANIC HARDWARE	
4	METAL	INTERIOR DOOR (DOUBLE)	6'-6"	7'-0"	1 3/4"	HOLLOW METAL	J-1	H-1	-	45.5 SF			3		
5	METAL	INTERIOR DOOR	3'-0"	7'-0"	1 3/4"	HOLLOW METAL	J-1	H-1	-	21 SF			1		
6	METAL	INTERIOR DOOR	3'-0"	7'-0"	1 3/4"	HOLLOW METAL	J-1	H-1	-	21 SF			1	LOCKABLE	
7	ALUMINUM	SLIDING DOOR (DOUBLE)	6'-0"	7'-0"	2"	ALUMINUM	J-2	H-2	-	42 SF			1		



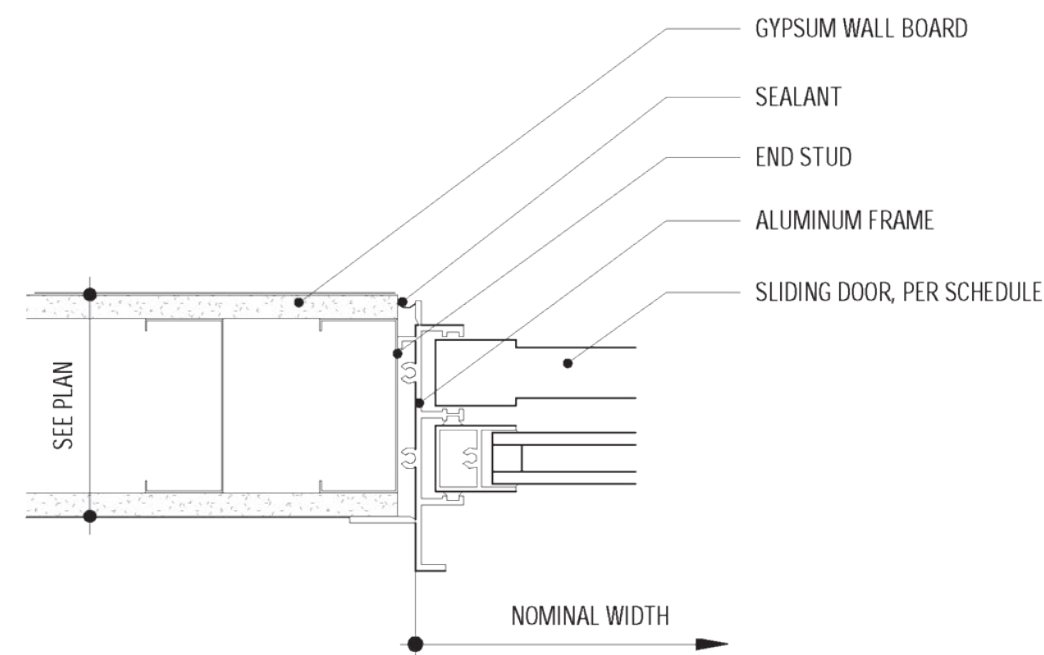
**H1** DOOR HEAD  
SCALE: 3" = 1'-0"



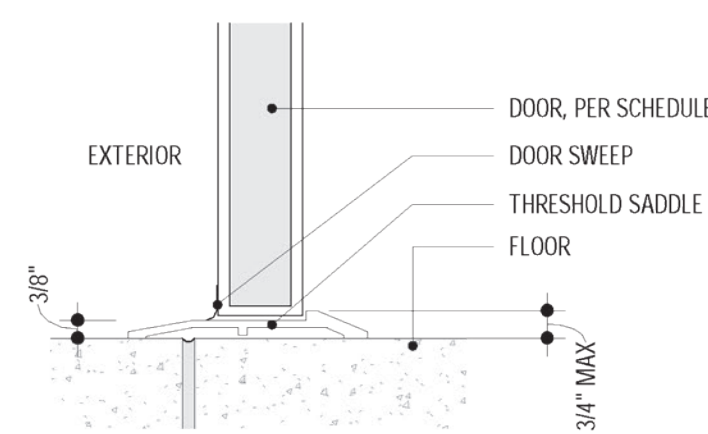
**H2** DOOR HEAD  
SCALE: 3" = 1'-0"



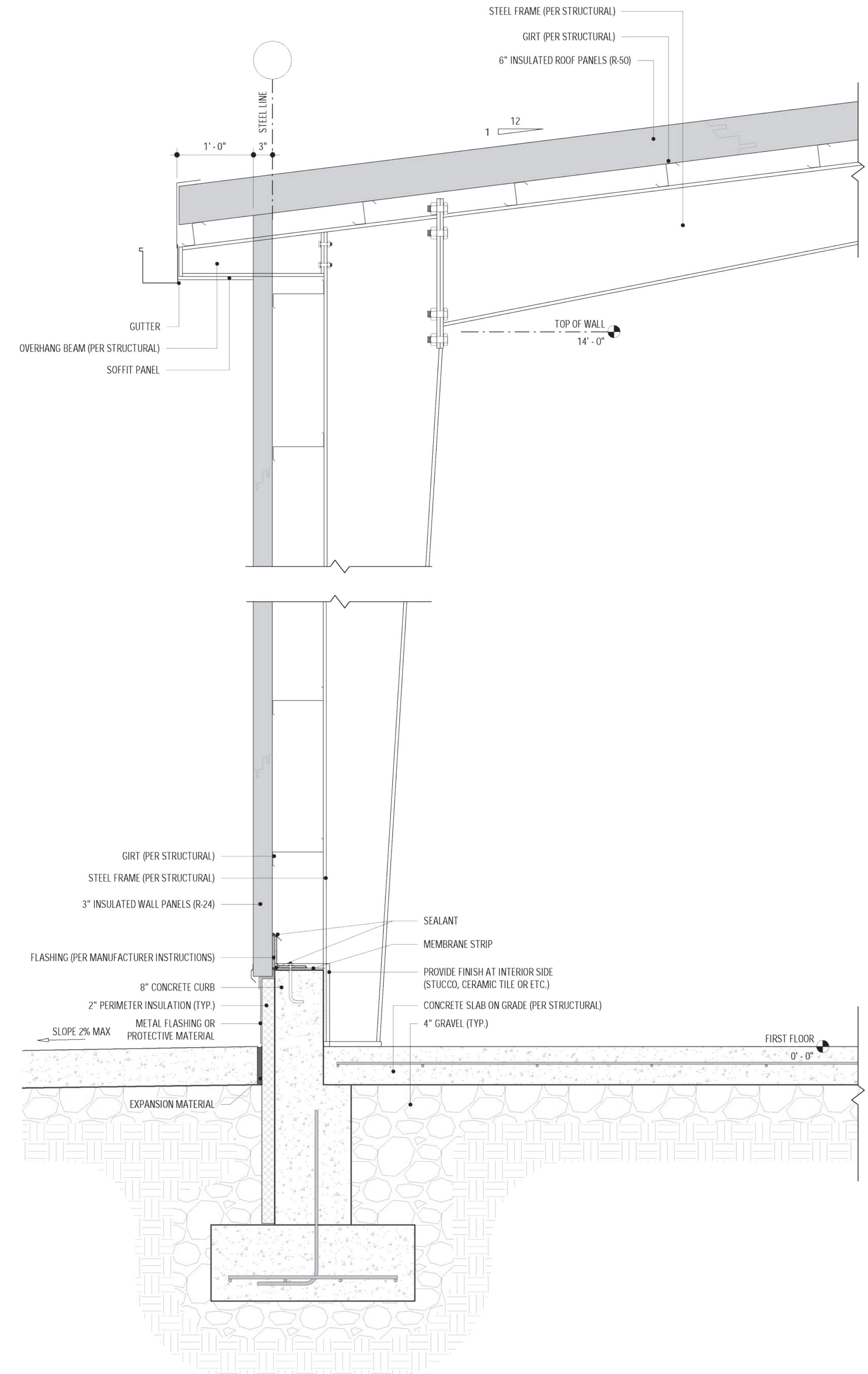
**J1** DOOR JAMB  
SCALE: 3" = 1'-0"



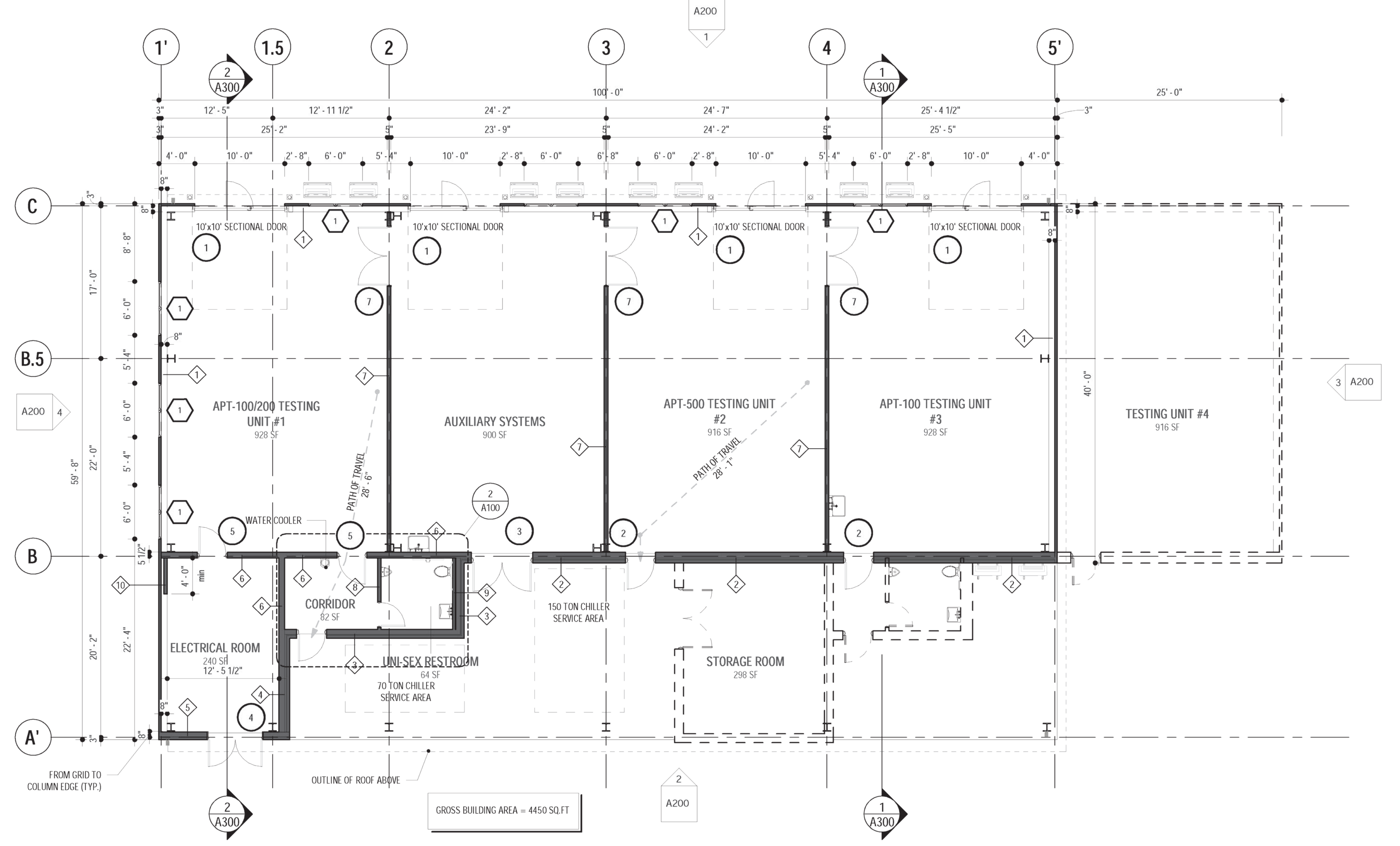
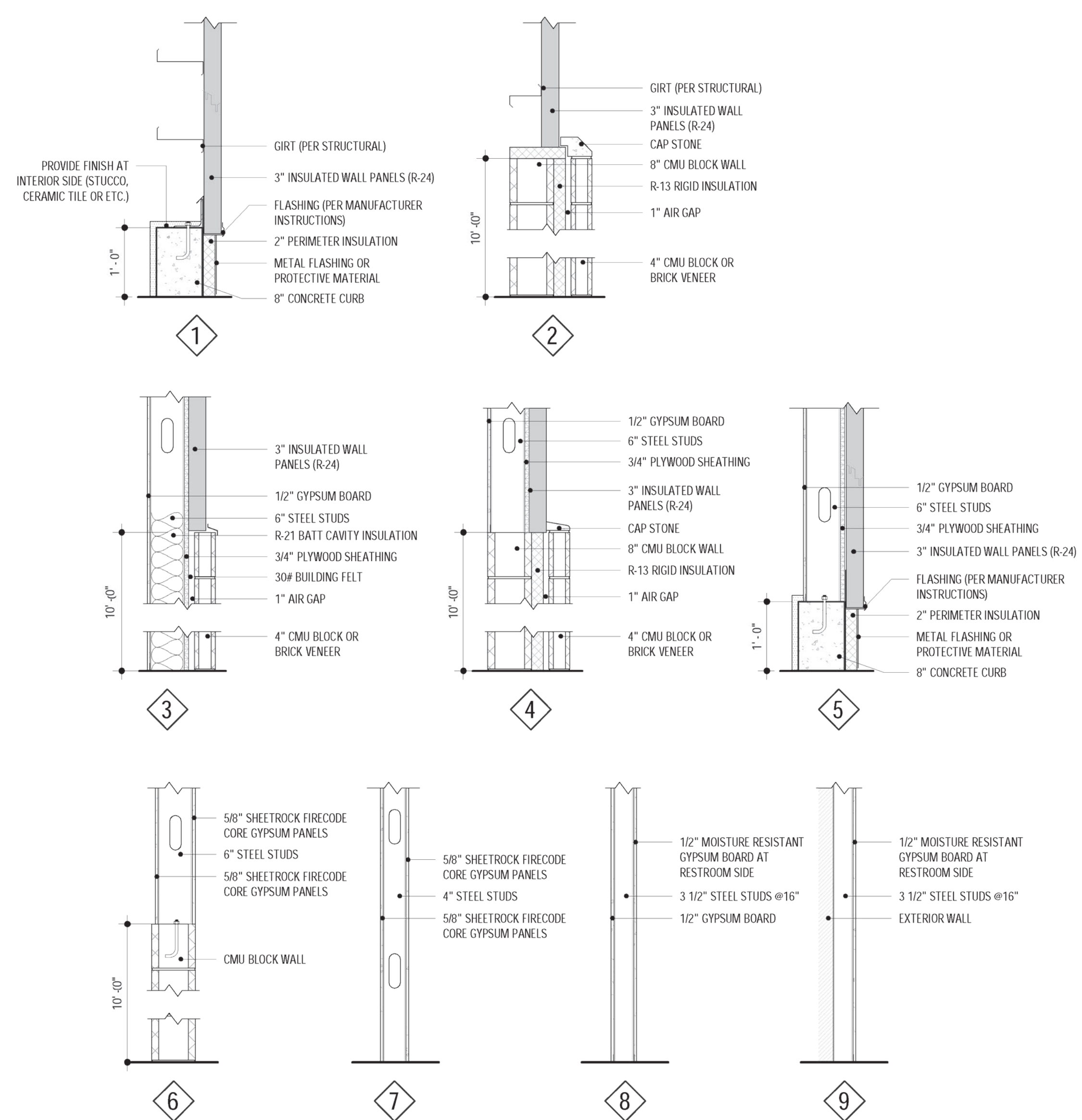
**J2** DOOR JAMB  
SCALE: 3" = 1'-0"



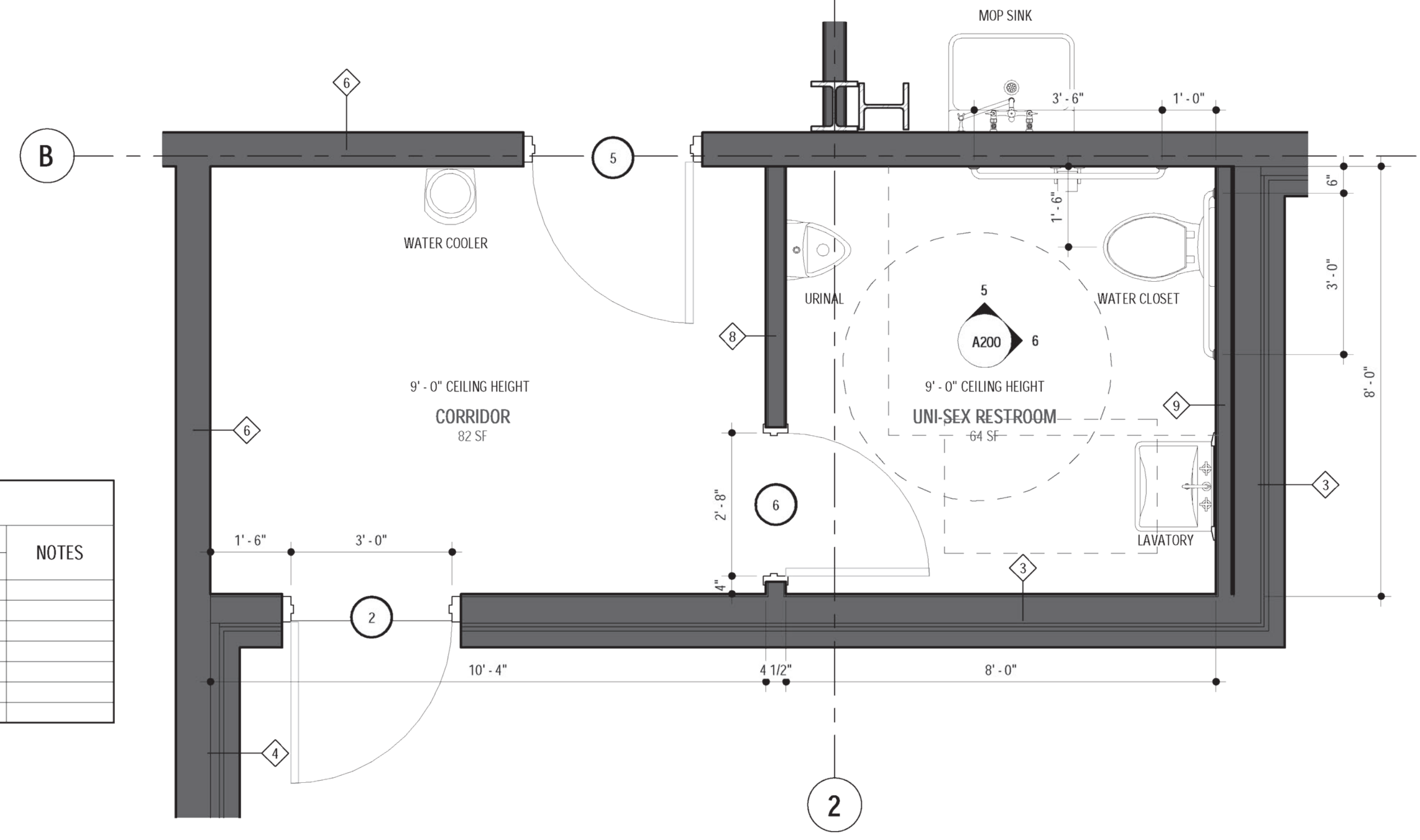
**S1** DOOR SILL  
SCALE: 3" = 1'-0"



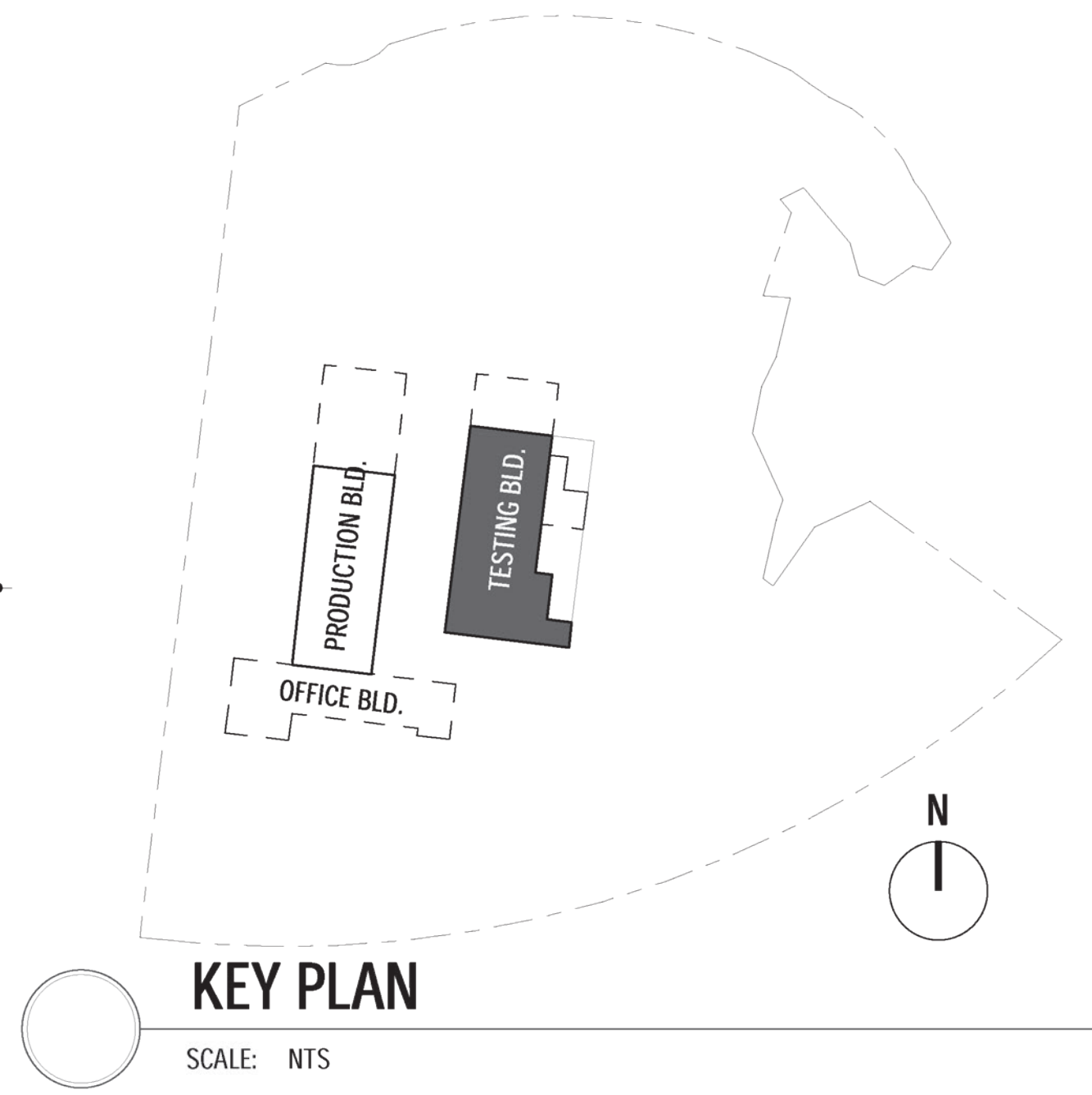
**1** WALL SECTION  
SCALE: 1" = 1'-0"



**1 TESTING BUILDING PLAN**  
SCALE: 1/8" = 1'-0"



**2 ENLARGED PLAN**  
SCALE: 1/2" = 1'-0"

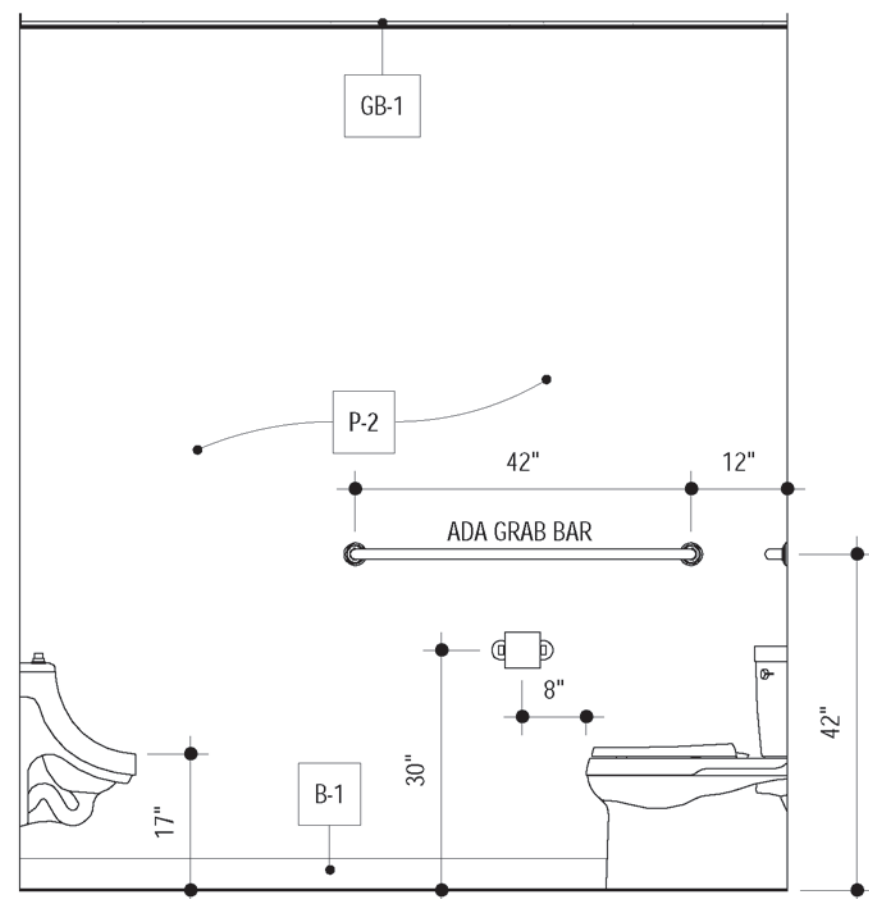


**KEY PLAN**  
SCALE: NTS

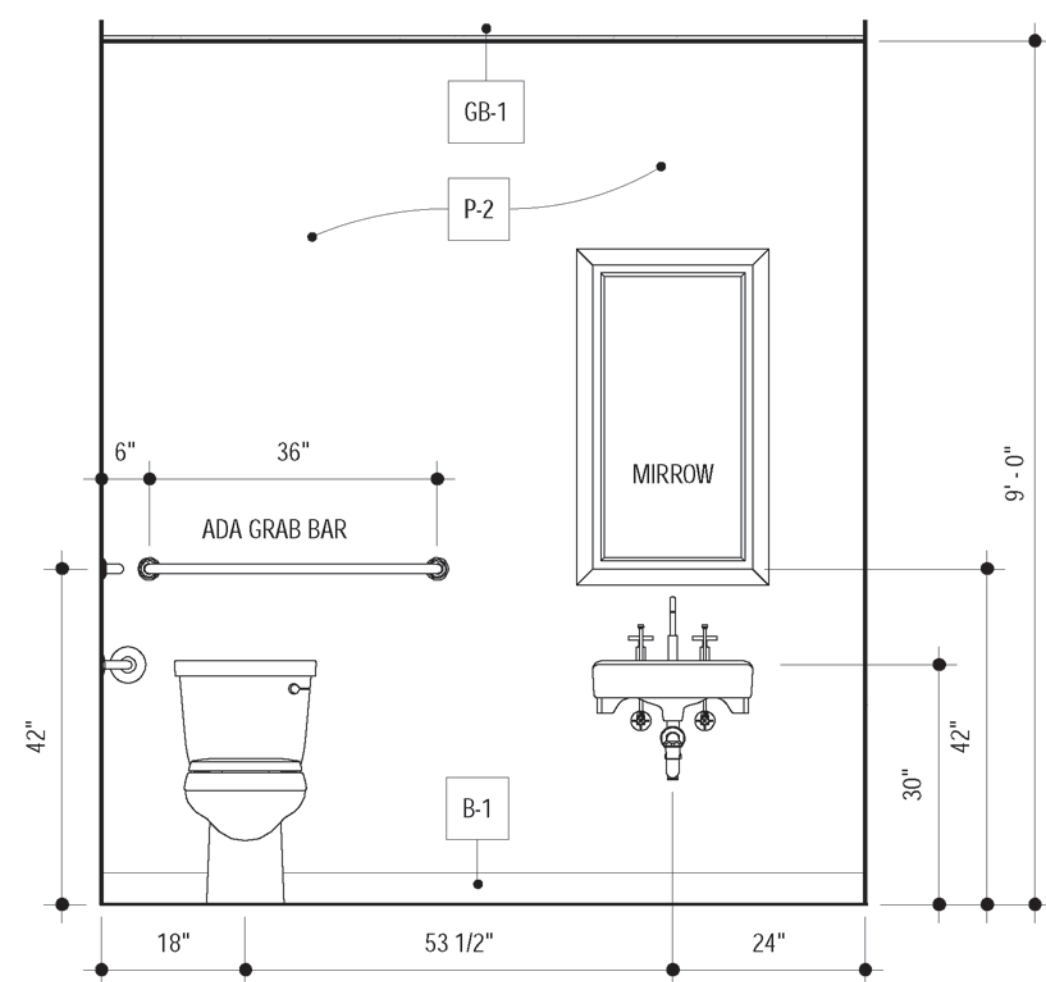
**3 WALL TYPES**  
SCALE: 3/4" = 1'-0"

NAME	FLOOR FINISH	BASE FINISH	WALL FINISH				CEILING		NOTES
			NORTH	EAST	SOUTH	WEST	FINISH	HEIGHT	
APT-100/200 TESTING UNIT #1	C-1		P-1	P-1					
AUXILIARY SYSTEMS	C-1		P-1	P-1	P-1				
APT-500 TESTING UNIT #2	C-1		P-1	P-1	P-1				
APT-100 TESTING UNIT #3	C-1		P-1	P-1	P-1				
ELECTRICAL ROOM	C-1	B-1	P-1	P-1		P-1	GB-1		
UNI-SEX RESTROOM	FT-1	B-1	P-2	P-2	P-2	P-2	GB-1	9'-0"	
CORRIDOR	C-1	B-1	P-1	P-1	P-1	P-1	GB-1	9'-0"	

- FLOOR**
- C-1 EPOXY ON POLISHED CONCRETE FLOOR
  - FT-1 PORCELAIN FLOOR TILES
- BASE**
- B-1 4" PORCELAIN TILE BASE
- WALL**
- P-1 TBD PAINTED GYPSUM WALL BOARDS
  - P-2 MOISTURE RESISTANT WALL PAINT OVER GYPSUM WALL BOARDS
- CEILING**
- GB-1 GYPSUM BOARDS PAINTED WHITE

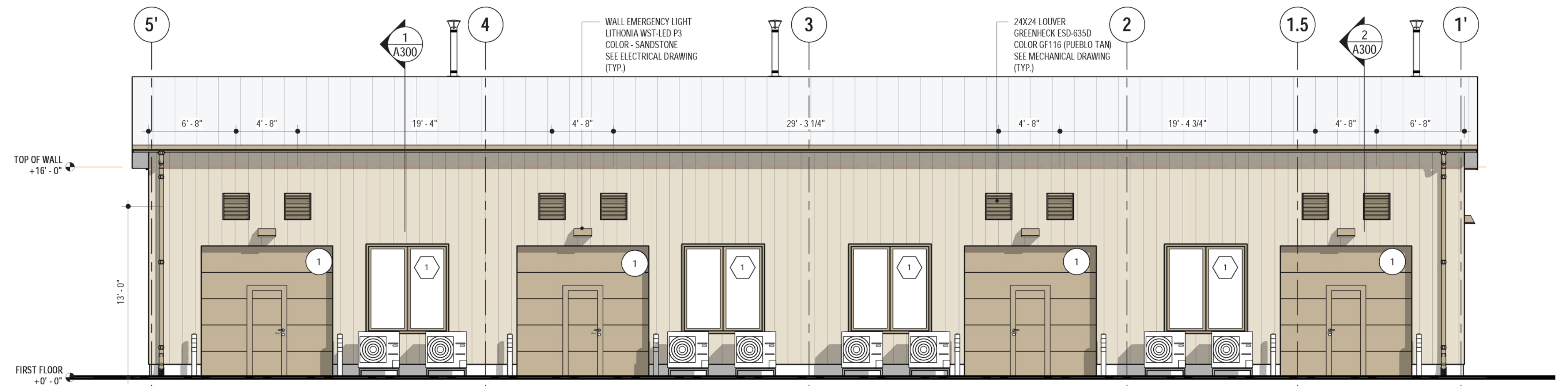


**5 RESTROOM ELEVATION**  
SCALE: 1/2" = 1'-0"

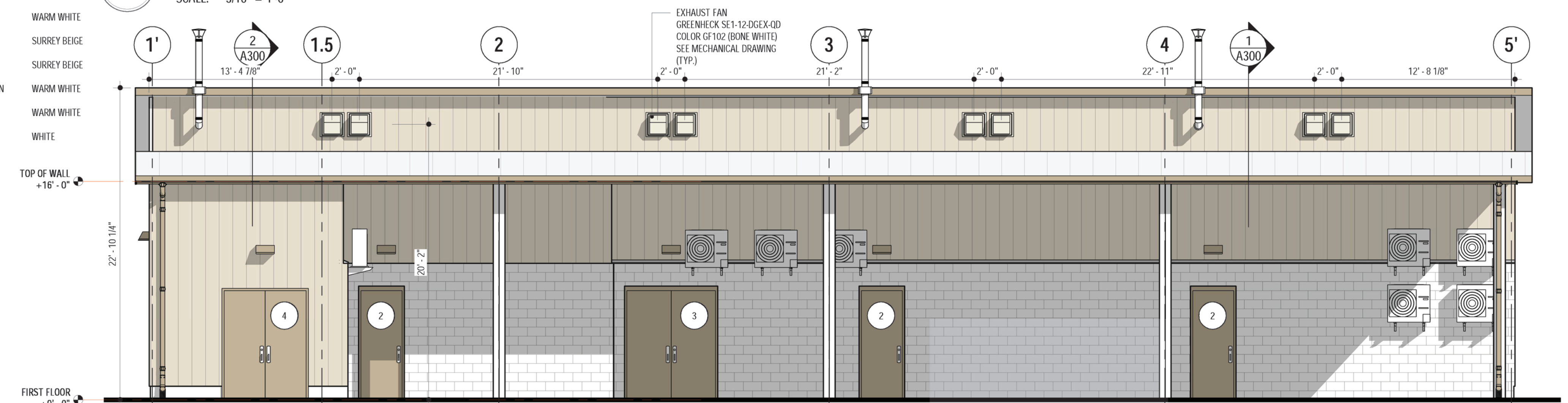


**6 RESTROOM ELEVATION**  
SCALE: 1/2" = 1'-0"

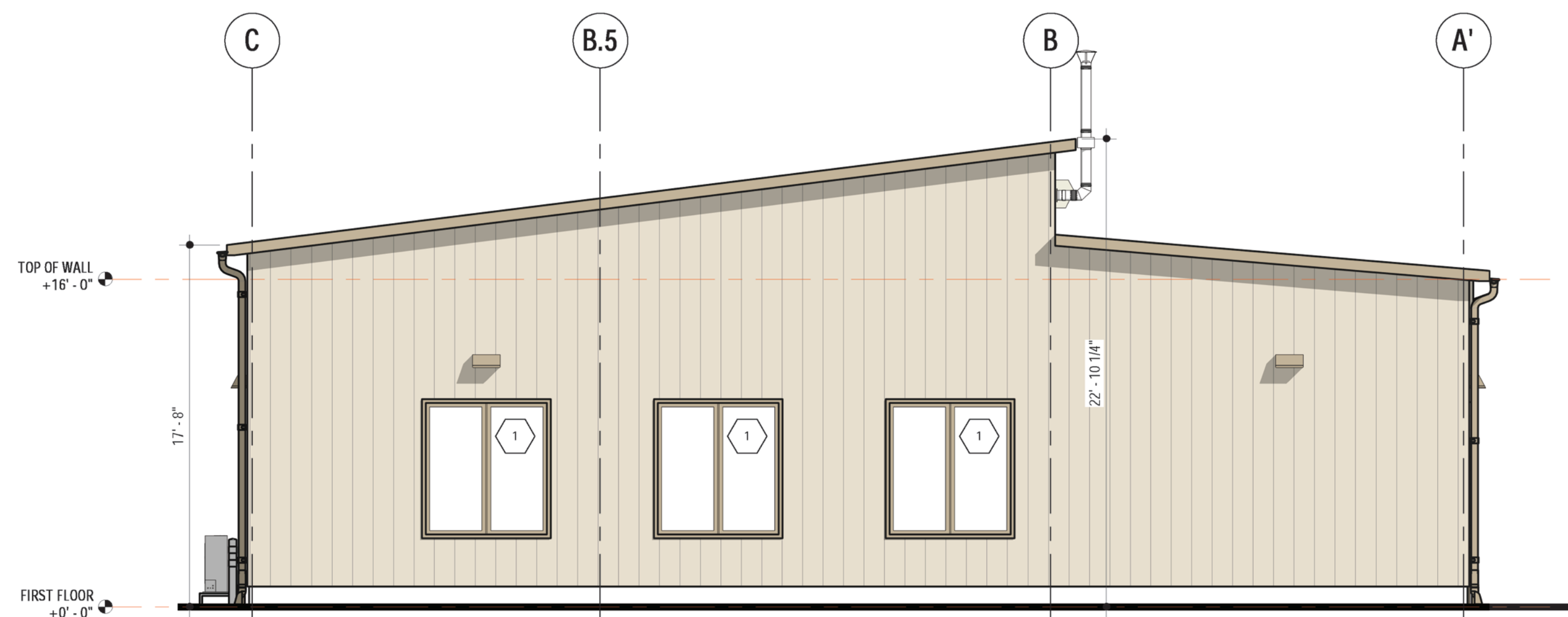
- EXTERIOR FINISH**
- ROOF PANELS
  - ROOF TRIMS - FASCIA/RAKE
  - GUTTERS
  - WALL PANELS
  - DOOR/WINDOW EDGE TRIM
  - OVERHEAD DOORS EDGE AND JAMB / TRIMS
  - BASE TRIM AND FLASHING OVER BOARD INSULATION
  - CORNER TRIMS
  - SOFFIT



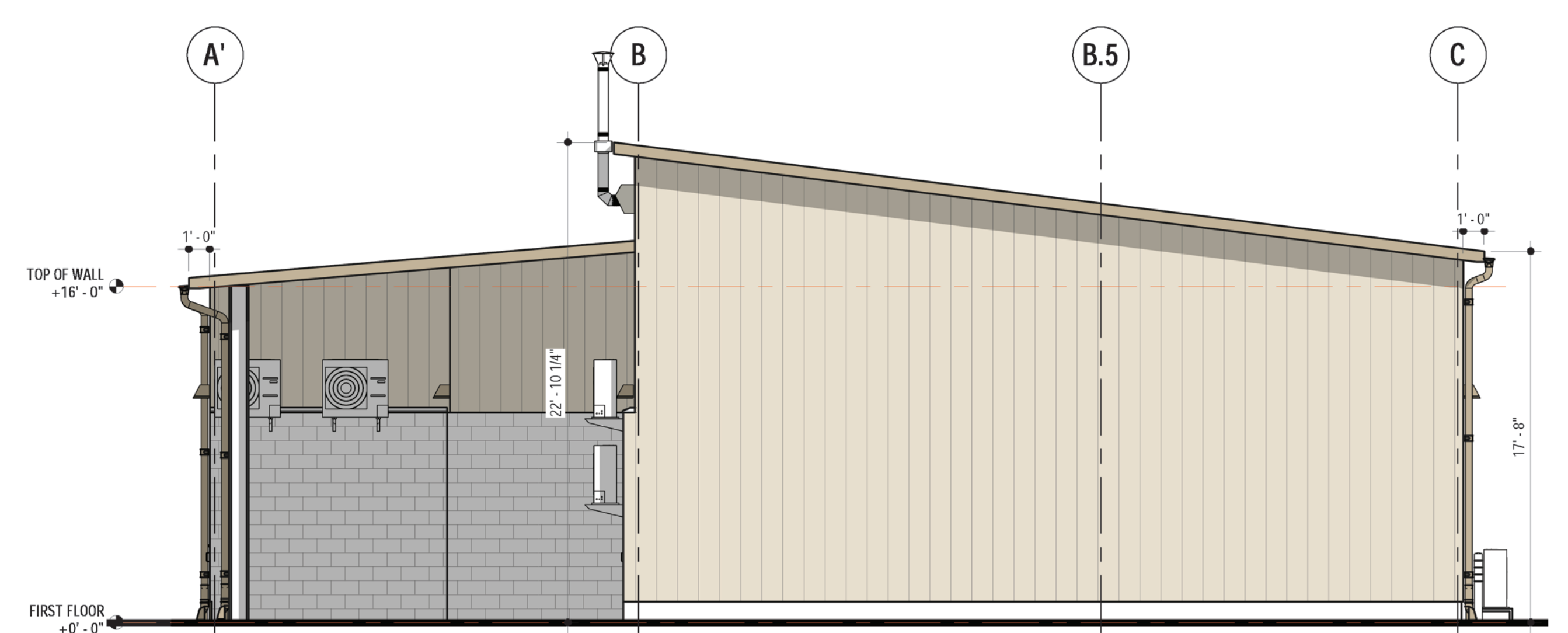
**1 WEST ELEVATION**  
SCALE: 3/16" = 1'-0"



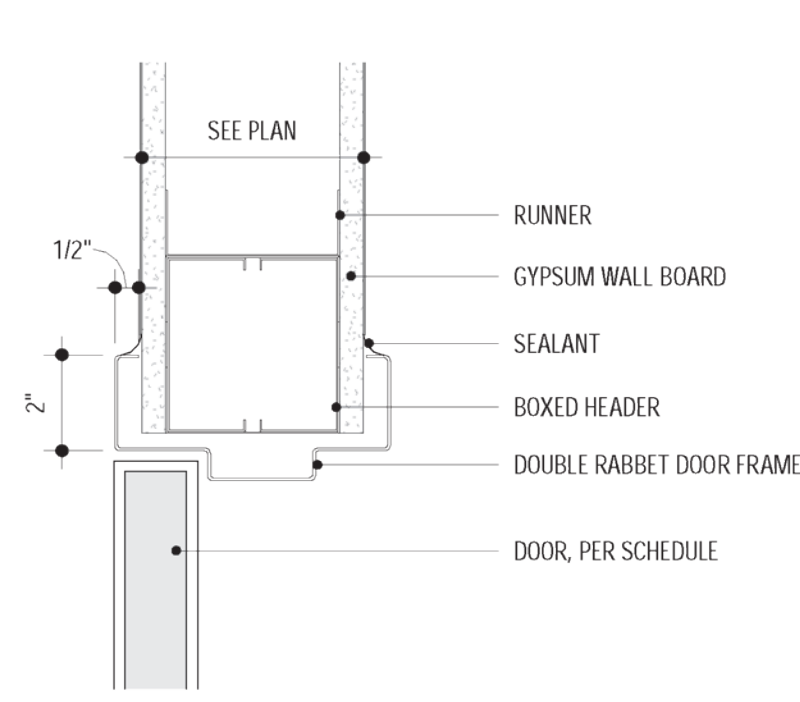
**2 EAST ELEVATION**  
SCALE: 3/16" = 1'-0"



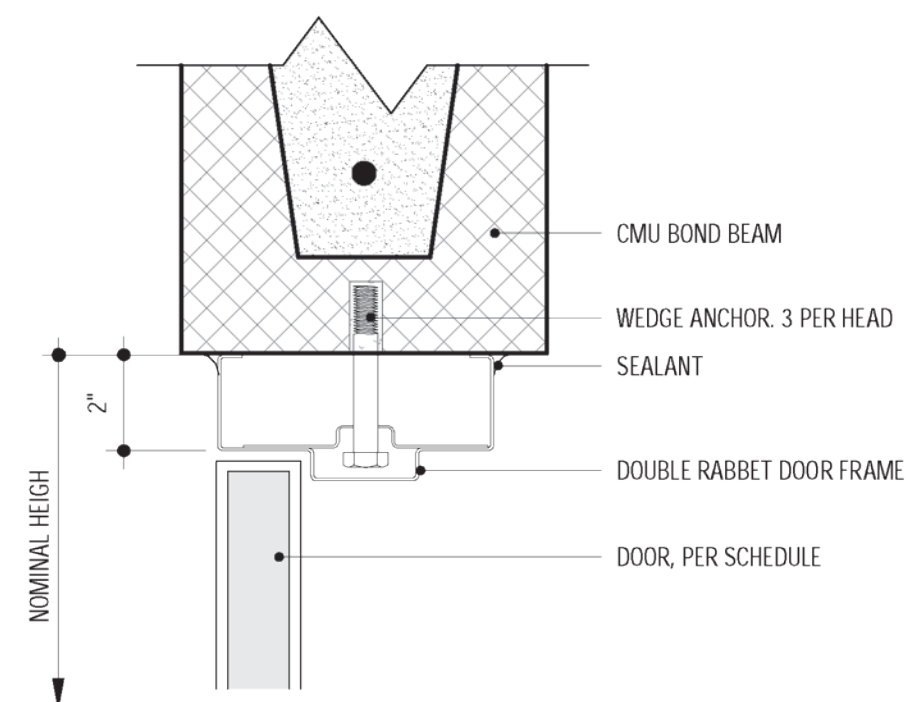
**4 SOUTH ELEVATION**  
SCALE: 3/16" = 1'-0"



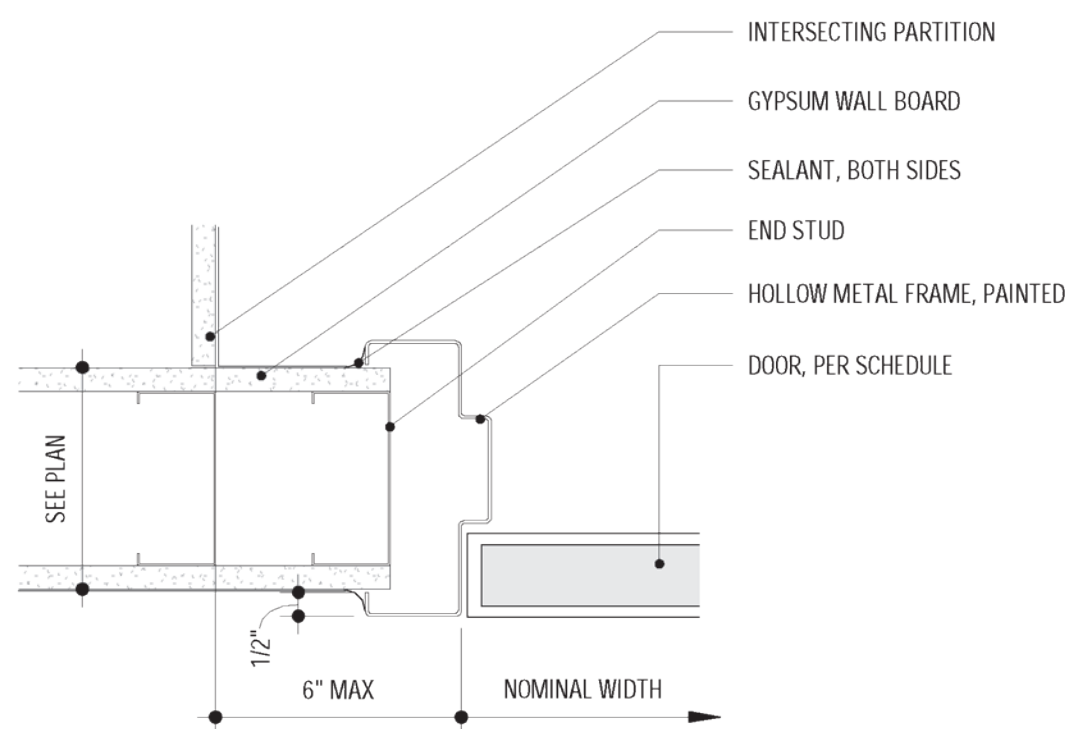
**3 NORTH ELEVATION**  
SCALE: 3/16" = 1'-0"



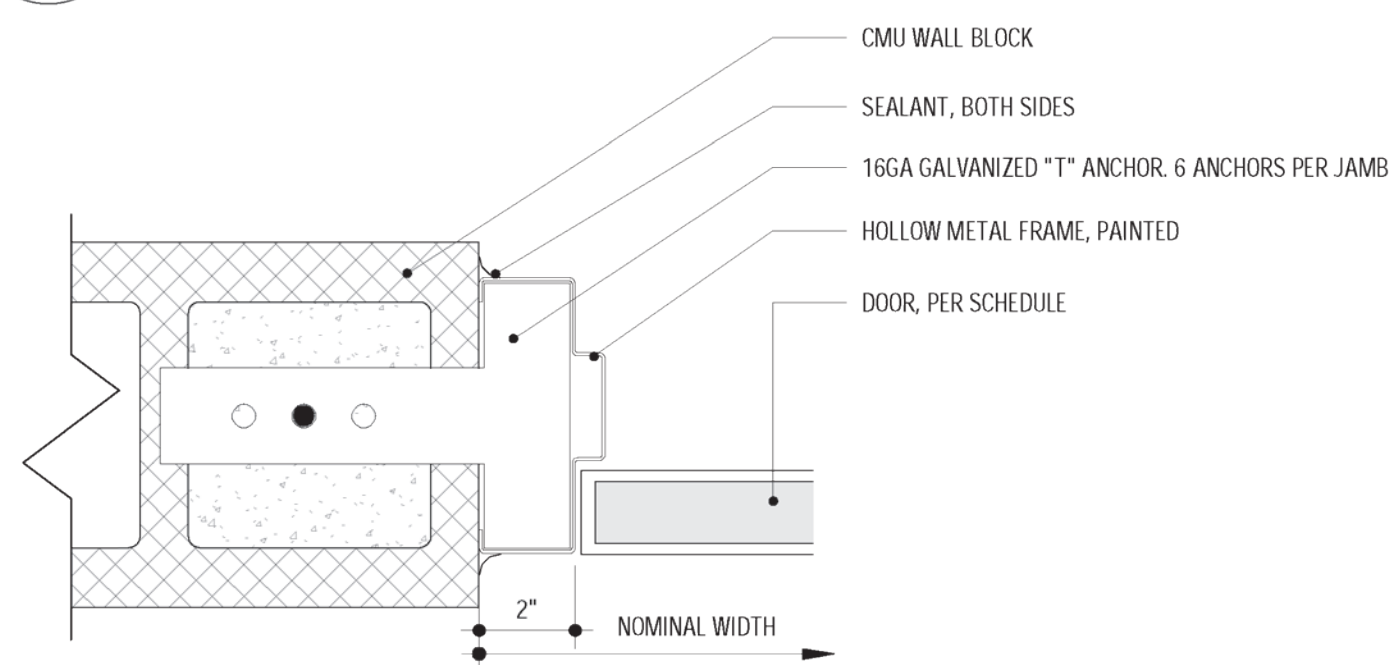
**H1** DOOR HEAD  
SCALE: 3" = 1'-0"



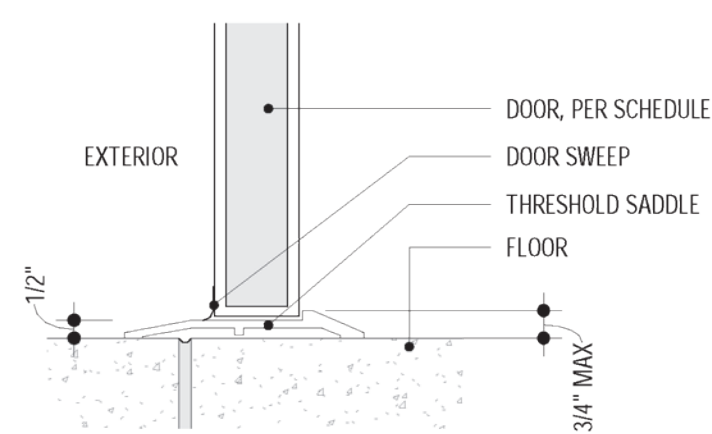
**H3** DOOR HEAD  
SCALE: 3" = 1'-0"



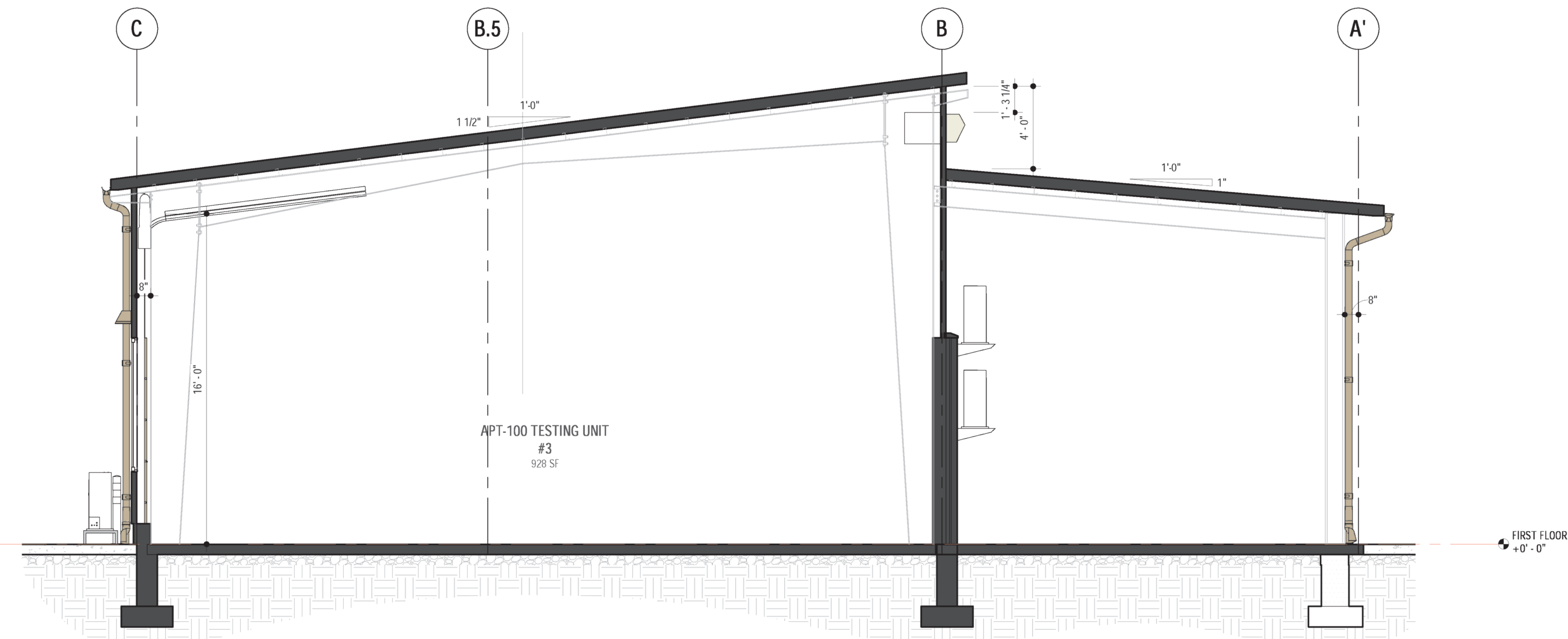
**J1** DOOR JAMB  
SCALE: 3" = 1'-0"



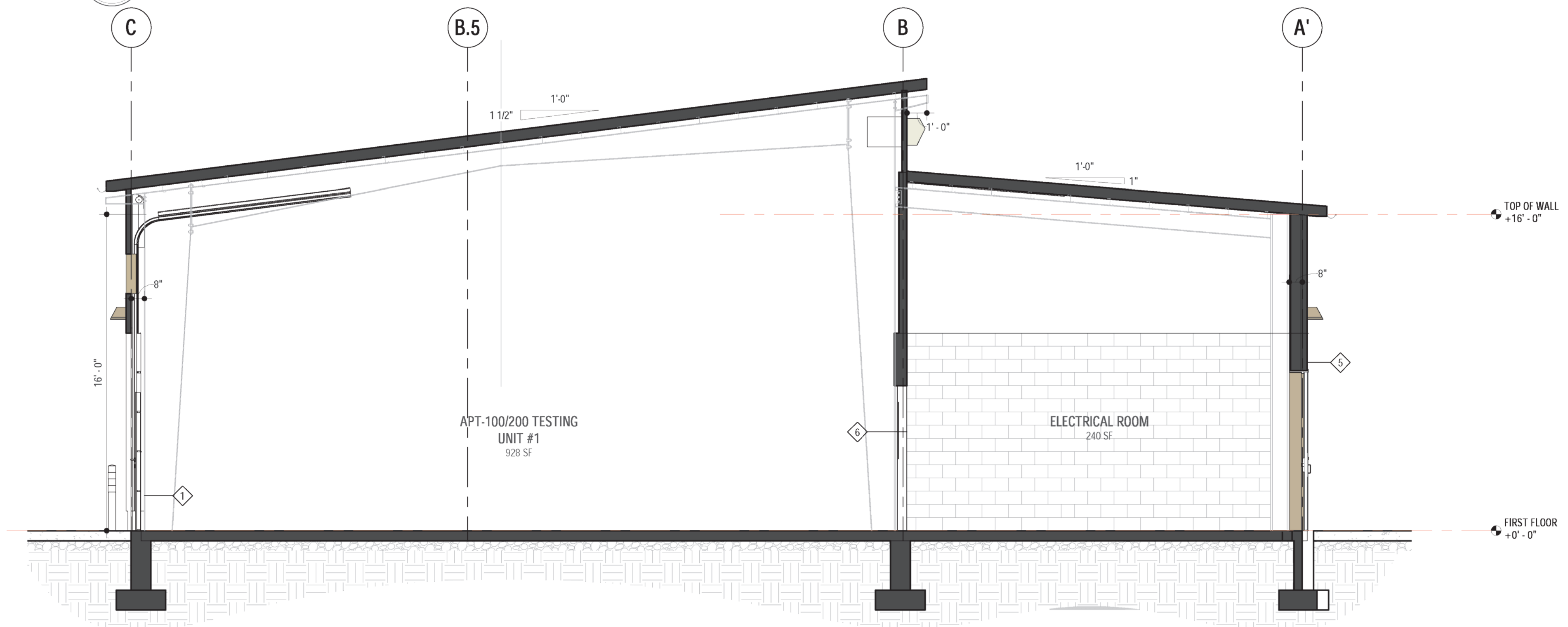
**J3** DOOR JAMB  
SCALE: 3" = 1'-0"



**S1** DOOR SILL  
SCALE: 3" = 1'-0"



**1** SECTION  
SCALE: 1/4" = 1'-0"



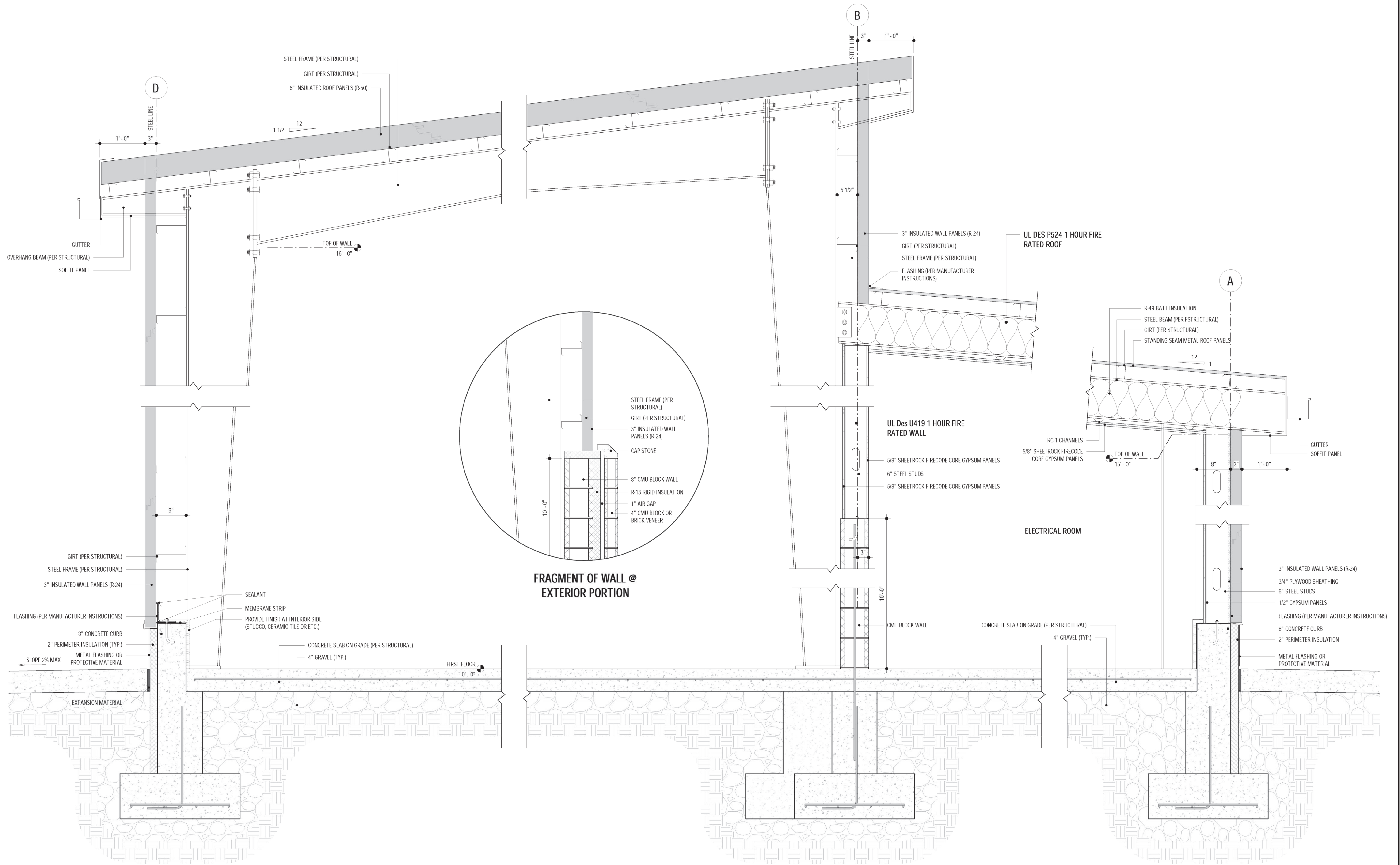
**2** SECTION  
SCALE: 1/4" = 1'-0"

WINDOW SCHEDULE

MARK	MATERIAL	TYPE	OPENING HEIGHT	OPENING WIDTH	SILL HEIGHT	AREA	U VALUE	SHGC	COUNT	REMARKS
1	METAL	CASEMENT (DOUBLE)	6'-6"	6'-0"	3'-6"	39 SF	0.4	0.4	7	

DOOR SCHEDULE

MARK	MATERIAL	TYPE	NOMINAL SIZE			FRAME				AREA	U-VALUE	SHGC	COUNT	HARDWARE	REMARKS
			WIDTH	HEIGHT	THICKNESS	MATERIAL	JAMB	HEAD	SILL						
1	METAL	SECTIONAL DOOR WITH PASS THRU	10'-0"	10'-0"		PER MFG.	PER MFG.	PER MFG.	PER MFG.	100 SF			4		
2	METAL	EXTERIOR DOOR	3'-0"	8'-0"	1 3/4"	HOLLOW METAL	PER WALL MFG.	PER WALL MFG.	S1	24 SF			3	LOCKABLE, WEATHER RESISTANT	
3	METAL	EXTERIOR DOOR (DOUBLE)	6'-6"	8'-0"	1 3/4"	HOLLOW METAL	J1	H3	S1	52 SF			1	LOCKABLE, WEATHER RESISTANT	
4	METAL	EXTERIOR DOOR (DOUBLE)	6'-0"	8'-0"	1 3/4"	HOLLOW METAL	J1	H1	S1	48 SF			1	LOCKABLE, WEATHER RESISTANT	
5	METAL	INTERIOR DOOR	3'-0"	7'-0"	1 3/4"	HOLLOW METAL	J3	H3	-	21 SF			2	FIRE RESISTANT	
6	METAL	INTERIOR DOOR	2'-8"	7'-0"	1 3/4"	HOLLOW METAL	J1	H1	-	18.67 SF			1	LOCKABLE	
7	METAL	INTERIOR DOOR (DOUBLE)	6'-6"	7'-0"	1 3/4"	HOLLOW METAL	J1	H1	-	45.5 SF			3	FIRE RESISTANT	



**1 WALL SECTION**

SCALE: 1" = 1'-0"

